

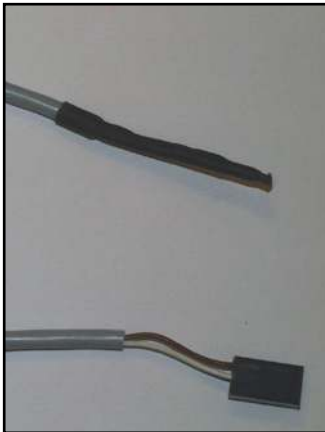
6.3 Sensors in EG models



6095 Micro Switch Reed Angled Arm.



70161 DC motor Bo. 54RPM 600Ncm 24V



- 305009 Temp.Probe NI1000 335cm+plug
- 305119 Temp.Probe NI1000 210cm+plug
- 305519 Temp.Probe NI1000 450cm+plug
- 305579 Temp.Probe NI1000 250cm+plug

For tanks and dryer on all EG Processors.
Select appropriate cablelength



911116 Repl pump oscillating GRI



911114 Circulation Pump 10L 110V IWA
911117 Circulation Pump 10L 230V IWA
GREEN



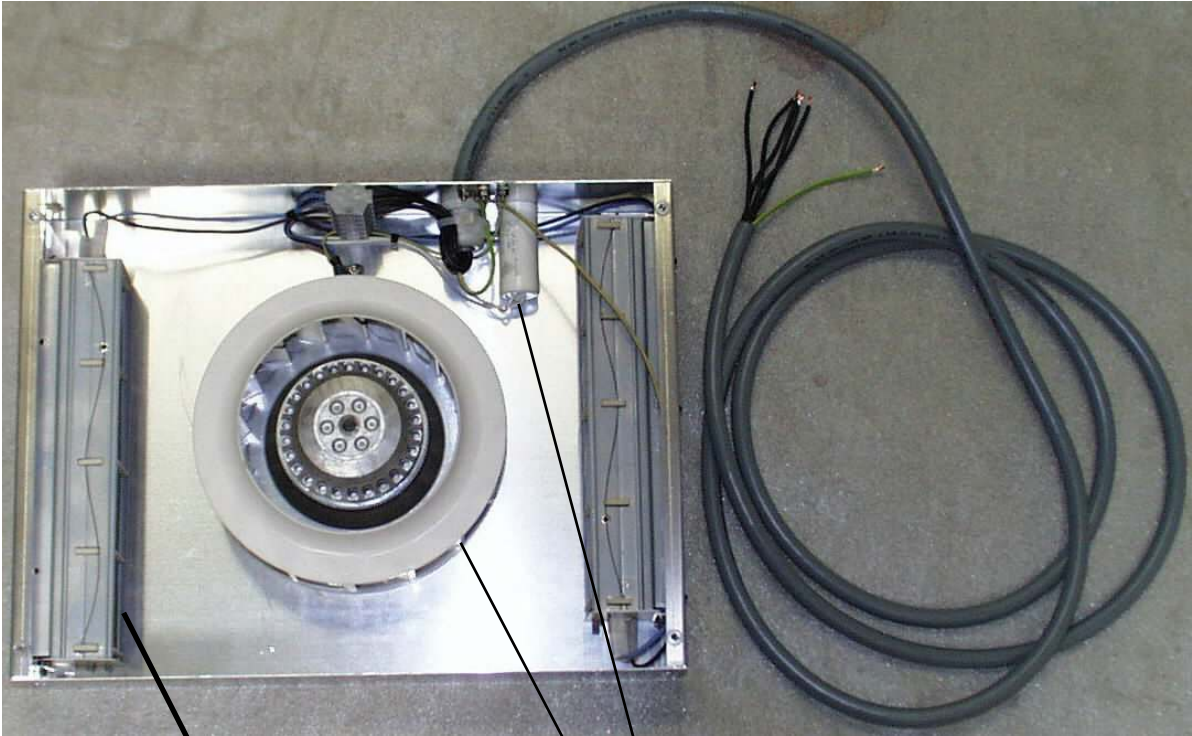
305326 Niveau probe,adjustable compl



445217 Circ.pump IW. MD-20 (Green)

68215 Circ. Pump Type X-962 (Black)

SECTION SIX: Removal/Replacement Procedures



- 305148 Heating Element Wire 3x1000W
- 70170 Radial Blower R190-2A 500m3/h
- 29012 Condensator 2uF/400VAC f. Bl.

Blower channels complete with 2 heating elements:

- 305699 Blower chann.radial4x1000W lower
- 305709 Blower chann.radial4x1000W upper

Blower channels complete with 1 heating elements:

- 316698 Blower chann. radial 3x1000W

Blower channels complete without heating elements

- 316697 Blower chann. radial no heat



911100 Blower Axial 220V 50/60Hz

SECTION 6



- 70148 Exhaust Blower
- 29012 Motorcapacitor 2uf 400Vac



T + 90 degree angle when cut here
65720 Fitting Channel 3x1"

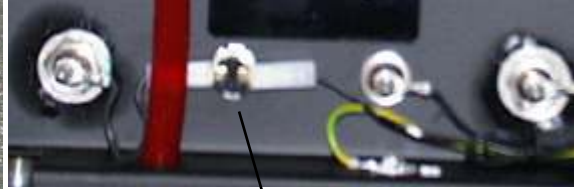


65169 Tap -1" for drain

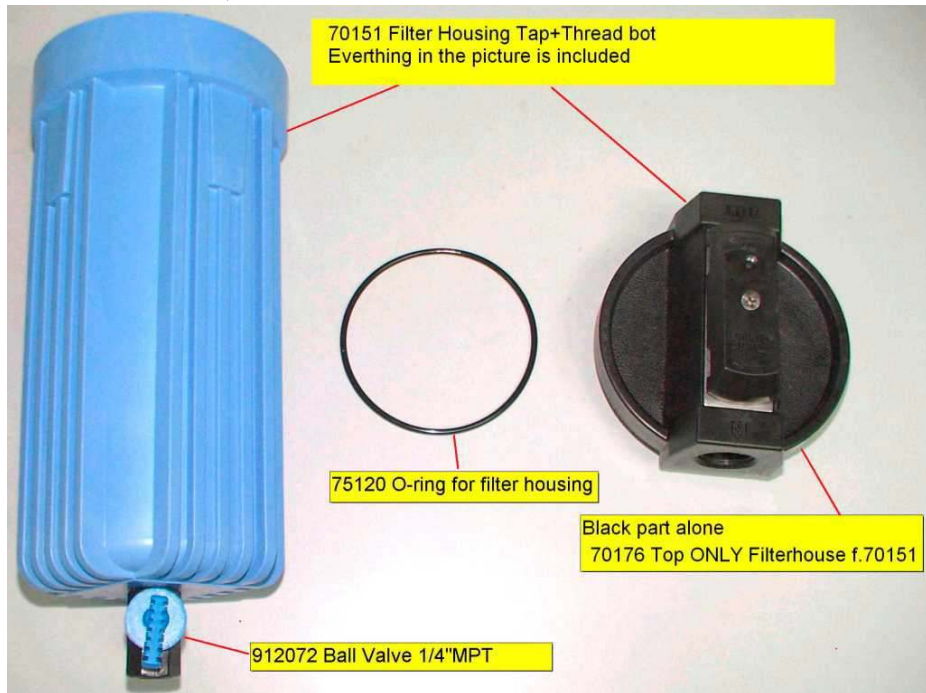
SECTION SIX: Removal/Replacement Procedures



66107 Heating Element 750W Dev, Fix



65752 Safety Thermostat TP.161 50øc

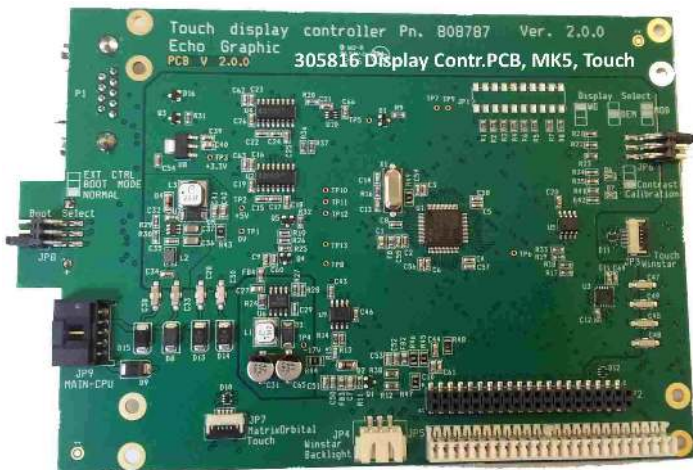


70151 Filter Housing Tap+Thread bot
Everthing in the picture is included

75120 O-ring for filter housing

Black part alone
70176 Top ONLY Filterhouse f.70151

912072 Ball Valve 1/4"MPT



305816 Display Contr.PCB, MK5, Touch
890760 LCD Display Touch Winstar SU

SECTION 6

117336 Starlock ϕ 5 stainless

117337 Starlock 1/4" stainless

117338 Starlock 10x9,6x0,3 stainless

233617 Disc Nylon ϕ 15x32x2mm

65558 Disc Isolit 1/2 In ϕ

88216 Flatwasher 10x21x2mm A4 D.125

88247 Lock Disc 18x11,2x1 MM

65557 Disc 10 ϕ x16x1 Nylon

88246 Lock Disc 15x9,5x1MM, Nylon

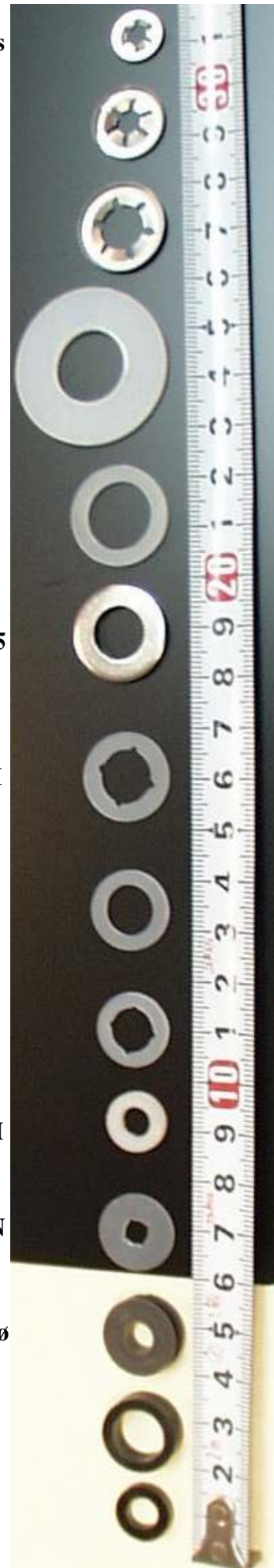
88251 Disc Nylon ϕ 6,4x12,0x1,6MM

65275 Lock Disc 1/4IN

65274 Pulleys 1/4IN ϕ

217007 ϕ 11/16x6 Plastic Spacer

217017 ϕ 6,5/12x3 Plastic Spacer



SECTION SIX: Removal/Replacement Procedures

65188 Cotter Pins 2.5 ø A4 Din 94

217334 Exc.to 217336 Spring 73x2.6x0.4

217336 Spring f 1 7/8" roller ø6x50x1



65273 Torsion Springs - Small

129117 Spring 0.63x8x24.5 stainless

155584 Spring F.Airguide HD Dry

88052 Screw Wg 8x40 A4-Coach Din571

82035 Raw Plug 12

88061 Screw WG 6x30 A4 Din 571

65633 Plug S8

136154 Guide Support

318524 Roller Hook 2*1" Plastic

318524 Roller Hook 2*1" Plastic



136074 Guide Sup. Crossover f.217144

913935 Guide fork f. ø6 black



913844 Guide Fork short F. ø10 white

913933 Guide fork long f. ø10 black

217185 Bearing ø1/4" 12x12 mm offset

217184 Bearing ø1/4" 12x12 mm -Brown

65296 Bearings ø14.15x10.3x8

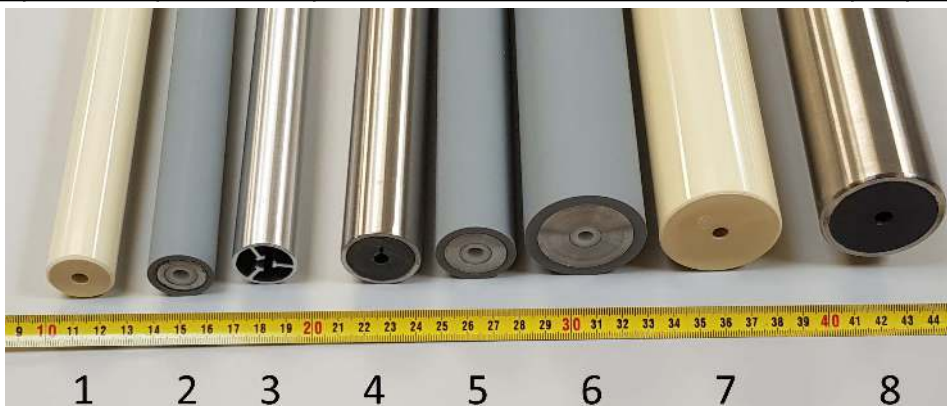
217040 Bearing ø 14.15x10.15x10

233424 Bearing ø14,2 f.20 x 20 hole



SECTION SIX: Removal/Replacement Procedures

Picture NO	Part No.	Dimensions diameter x Length [mm]	No of roller in each rack D – F - W Description	EG7430NDT	EG750PCB	EG751PCB	EG900PCB	EG901PCB	EG1371PCB	EG1661PCB
1	914012	25,4x450	Roller 1"x17" PU smooth 510g (Dry)	12						
1	129013	25.4x751	Roller PU. 1"x 29" Smooth 600g		1					
1	136163	25.4x914	Roller PU 1X36"smooth 720g				1			
1	155023	25,4x1373	Polyurethan roller 1X54"smooth (dry)						37	
1	129182	25.4x751	Roller PU 1X29"smooth heavy1500g		1					
1	136183	25.4x914	Roller PU 1X36"smooth heavy2000g				1			
2	117020	25,4x450	Roller 1x17" Soft rubber EPDM	1						
2	129054	25.4x751	Roller soft EPDM 1x29"		1	1				
2	136354	25.4x914	Roller soft EPDM 1x36"				1	1		
2	155355	25,4x1373	Roller soft EPDM 1x54"						1	
2	650367	25,4x1663	Roller soft EPDM 1x65" Light (dry 10)							1
3	129275	25.4x751	Roller 25.4x751.2 ALUstar (dry rack)		22	1				
3	136275	25.4x914	Roller 25.4x915 ALUstar (dry rack)				22	1		
3	155275	25,4x1373	Roller 25.4x1373 ALUstar (dry rack)							1
3	650275	25,4x1663	Roller 25.4x1663 ALUstar (dry rack)							37
4	650293	31,5x1663	Roller >31,5x65" steel							1
5	117285	31,7x450	1 1/4"Soft Rubber Roller 17"	3						
5	129283	31.7x751	1 1/4"Soft Rubber Roller EPDM			3				
5	136284	31.7x914	1 1/4" Soft Rubber Roller 36"					3		
5	155284	31,7x1373	1 1/4"x54" Soft Rubber Roller						3	
5	650284	31,7x1663	Roller 1 1/4x65" Soft Rubber							2
6	117271	47,6x450	1 7/8 x 17"Soft Rubber Roller	4						
6	129273	47.6x751	1 7/8 x 29"Soft Rubber Roller		3	4				
6	136274	47.6x914	1 7/8" Soft Rubber Roller 36"				3	4		
6	1552274	47,6x1373	1 7/8"x54" Soft Rubber Roller						4	
6	650274	47,6x1663	Roller 1 7/8x65" SR EPDM							4
7	117451	47,6x450	1 7/8"x17" Pu Roller Smooth	5						
7	129453	47.6x751	1 7/8"x29" Pu Roller Smooth		3	5				
7	136453	47.6x914	1 7/8x36" PU Roller Smooth				3	5		
7	155453	47,6x1373	1 7/8" x 54" PU roller smooth						5	
7	650453	47,6x1663	1 7/8" x 65" PU roller smooth							1
8	650243	47,6x1663	Roller 1 7/8"x65" steel							1



SECTION SIX: Removal/Replacement Procedures

6.4 Complete Roller Overview

Roller Types	Part number				
	29"	36"	45"	54"	65"
Processor Type	EG75X	EG90X	EG114X	EG137X	EG166X
13/16" Soft Rubber EPDM	129064	136374	330034	155027	
25mm Steel Roller Solid					650044
25,2mm Soft Rubber EPDM	Replaced by 1" / 25.4mm Soft rubber				
25,4mm ALUstar	129275	136275	330275	155275	650275
1" PU Roller smoot	129013	136163	330003	155023	
1" Roller PU rough	129003	61131	330012	54454	
1" Roller PU smooth havy	129182	136183			
1" Soft Rubber EPDM	129054	136354	330354	155355	650237
31,5mm Hard Rubber	Replaced by 1 1/4" soft rub.			155294	650293
1 1/4" steel Roller					650253
1 1/4" Hard Rubber				155227	
1 1/4" Soft Rubber Roller	129283	136284	330284	155284	650284
1 7/8" PU Roller smoot	129453	136453	330453	155453	650453
1 7/8" Soft Rubber Roller EPDM	129273	136274	330274	155274	650274
1 7/8" Steel Roller					650243

6.5 Axle Overview

Type	Name	Part number
O	Axle- ϕ 1/4" x35,8mm	276034
LO	Axle- O >1/4" x 47.8 Long	235184
D	Axle D ϕ 1/4" x54,5mm	276044
	Axle-D 1/4 IN,Long F.l.G.W.	235234
D1	Axle-D 67.5 Long,1 Gear Wheel	276074
D2	Axle-D 67,5 Long,2 Gear Wheel	276084



On location drawings the letter reference only refers to type. **NOT** how long the axle is.

Please check the sequence number in the part list when ordering for a specific roller.

6.6 Gearwheel Overview

Part No	Gears
233014	Gearwheel 10-T, D-Hole
65980	Gearwheel 13-T W/D Hole 1/4In
217001	Gearwheel 16T + 18T D-hole
65270	Gearwheel 16-T 1/4 In D
65271	Gearwheel 16-T 1/4 In ϕ
217366	Gearwheel 16T ϕ 1/4" W12,2
275037	Gearwheel 16-T,D-Hole W.Lock
68807	Gearwheel 16T+18T, 1/4" ϕ PA12
276134	Gearwheel 16-T+18-T,1/4In ϕ

65979	Gearwheel 18-T W/D Hole
65991	Gearwheel 18-T W/ø-Hole 1/4In
117538	Gearwheel 20T D-Hole
68803	Gearwheel 20T D-Hole PA12
117238	Gearwheel 20T NV16 M=Pitch 16
217594	Gearwheel 20T Ø-hole PA12
68806	Gearwheel 24-T 10ø PA12
233454	Gearwheel 24-T 14,2ø
234144	Gearwheel 24T W.NV 16 Hole
68011	Gearwheel 24-T ø1/2" - 17 MM
217164	Gearwheel 24T ø10,2
276154	Gearwheel 24T ø10,2 F.ø2,5 SU
217314	Gearwheel 25T ø14,1 whfc
65266	Gearwheel 30-T 1/4 In - D
68804	Gearwheel 30-T 1/4" D PA12
54266	Gearwheel 30-T ø 10 MSH
117548	Gearwheel 32T D-Hole 1/4"
275114	Gearwheel 32-T Nv 16
117528	Gearwheel 32T NV=16
65993	Gearwheel 32-T W/10,2øW =9.6
217155	Gearwheel 32-T ø10.2 w = 17mm
65502	Gearwheel 36-T 10mm ø MSH
275134	Gearwheel 36-T Nv 16
117518	Gearwheel 36T NV16
65283	Gearwheel 36-T ø10,2 MM
317704	Gearwheel 40T f. ø10 clutch
65981	Gearwheel 40-T W. 10,2ø
233445	Gearwheel 42T ø10.2/Width10.5
233444	Gearwheel 42-T, ø10,2
233414	Gearwheel 48-T 10,2ø
233413	Gearwheel 48T 10,2ø width=16
275124	Gearwheel 48-T Nv 16
233415	Gearwheel 48T ø10.5/Width10.5
117086	Gearwheel 78T
117088	Gearwheel 78T, ø14,1 F.Clutch
117087	Gearwheel 79T, ø10,2 F.Clutch
117097	Gearwheel 79T,ø14,1 F.Clutch
65139	Gearwheel 80-T ø10 MM
117874	Gearwheel 80T ø14,1 Hole
129254	Timing belt pull. 16XL037 ø10
316067	Timing belt pull.HTD5M 16T D
316077	Timing belt pull.HTD5M 16Tx10
316057	Timing belt pulley HTD 5M 21T
129264	Timing belt pulley ø 16XL 03
129334	Timing belt pully 30XL037 key
129335	Timing belt pully 44XL037 key
317514	Timing pulley 16T, Dolev
447054	Timing pulley 24T f ø10 clutc

All partnumber are always printed on the gearwheel it self.